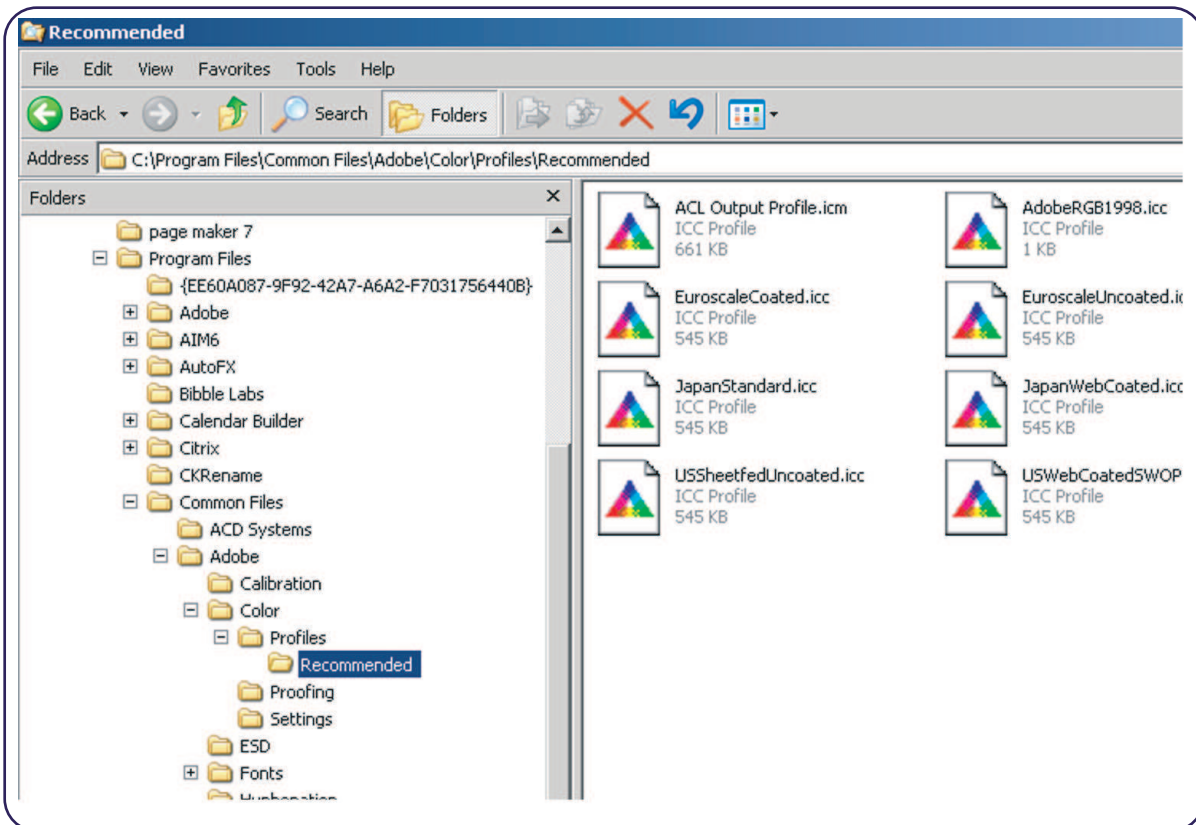


Using Allied Color Profiles in PhotoShop

For PhotoShop users paste the Allied Output Profile in to the folder listed:
C:/ program files/Common Files/Adobe/Color/Profiles/Recommended



Then in PhotoShop goto Edit, select color settings. In the working spaces RGB drop downmenu choose the Allied Color output profile. Click OK to save the settings
You are now properly set to color correct your images.

